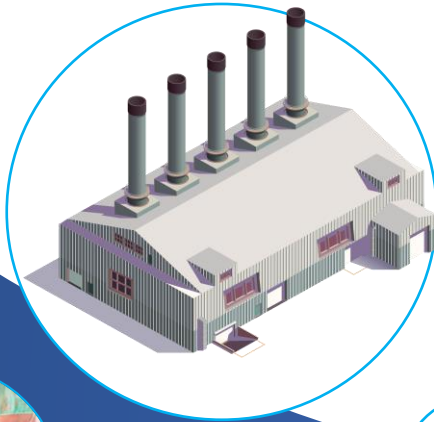


Are you a FoodTech company and planning to enter international markets? RS NESS can support you in the following fields:



Regulation

If you have proof of concept and plans to come to Europe or the US. There are many a regulatory aspects related for FoodTech Industry shall be met prior to marketing in US & EU (FDA, USDA).

How we can support you?

- Regulation strategy establishing
- Discussions with regulatory authorities
- Design and development support from a regulatory perspective

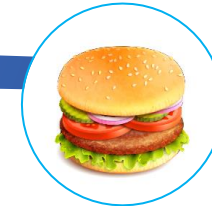
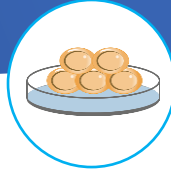
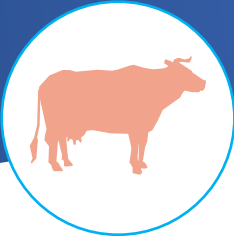
Engineering

Are you are planning to move from development to production or a manufacturing company that increase production capacity (Scale Up), or modify an existing production process, or plan to build a manufacturing plant.

Characterization and planning of the processes, equipment & utility and facility this is the key to success in manufacturing processes & compliance with regulatory requirements..

How we can support you?

- Utility/Equipment engineering design
- Facility layout design
- Process development



Quality Assurance (QA)

Upon looking to expand business from a small company or a low quality company planning to “play in the big leagues” and expanding to international markets.

How we can support you?

- Establishing or improving the quality system
- Supporting with Quality audits (both internal and external)
- Routine management of QMS elements including risk management.

Validation

When you are developing the QC test or you are a manufacturing company, or increase production capacity (Scale Up), or plan to build a manufacturing plant, or modify an existing production process.

How we can support you?

- Facility/Utility/Equipment (IQ/ OQ/ PQ)
- Process Validation
- Computerized System Validation (CSV)
- Test Method Validation (TMV)

Project Management

As part of your overall facility and engineering projects, such as scale-ups, facility upgrades, integrations etc.

How we can support you?

- Project Management Consulting Services
- Owner Representative services - Acting on behalf of owner during a Project with any combination of parties (Engineering, Construction, LSTK, EPCM).

RS NESS provides an umbrella of services to the Life Science industry in different lifecycle stages incorporating end-to-end project activities while adhering to the regulatory requirements. Knowledge, professionalism, and dedication lead our highly qualified team to your success.